



# INSTALLATION INSTRUCTIONS

Mortised Hardware

Part Number: 34337

Read the legend below in order to easily follow along and install your hardware. If needed, the hardware assembly is illustrated on the right.

**Legend**

1 • 2 • 3 ... Follow the steps in order, from 1 to 11.

Red objects are the action items for that step.

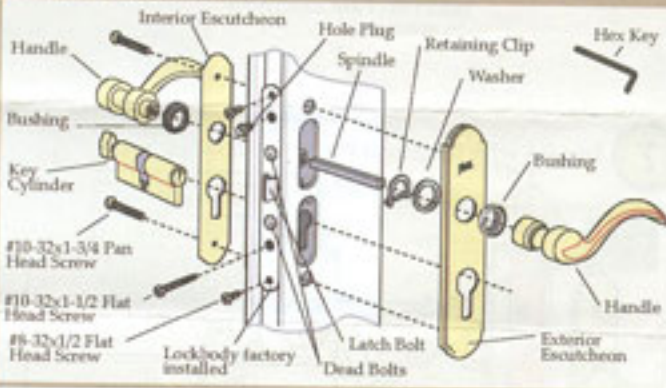
**MUST READ!** Instructions in the yellow boxes are **IMPORTANT!**

NOTE: handle style shown may vary by model, however, the installation steps will be the same.

### Tools Required

- Phillips screwdriver #2
- Hex Key (provided)

### Handle Parts Illustration



**START** Note: A right hinge installation is illustrated in each step.

**1** Assemble: Exterior handle, black bushing, exterior escutcheon, and flat washer.

Choose your exterior handle.  
 Scroll handles point down ...  
 ... whereas non scroll exterior handles are taller ...

Qty. 1 Black Bushing

Qty. 1 Flat Washer

Qty. 1 Retaining Clip

**2** Secure with retaining clip.

**3** Insert spindle.

**4** Tighten set screw.

Hex Key (provided)

**5** Lift up Lockbody. Insert key cylinder.

Turn-knob faces interior side

Lift Up

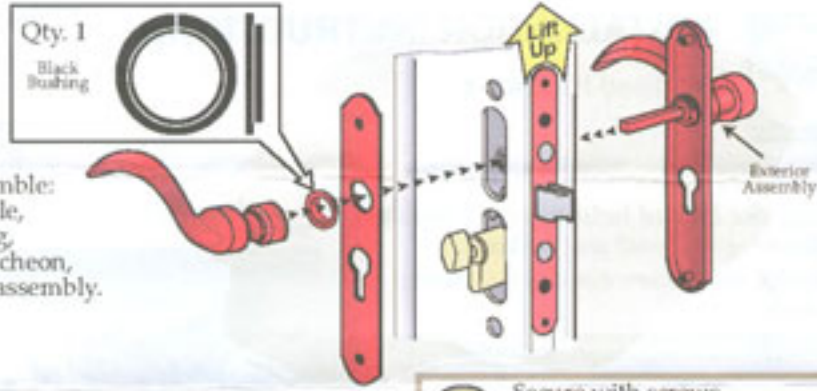
Insert

Continued on page 2

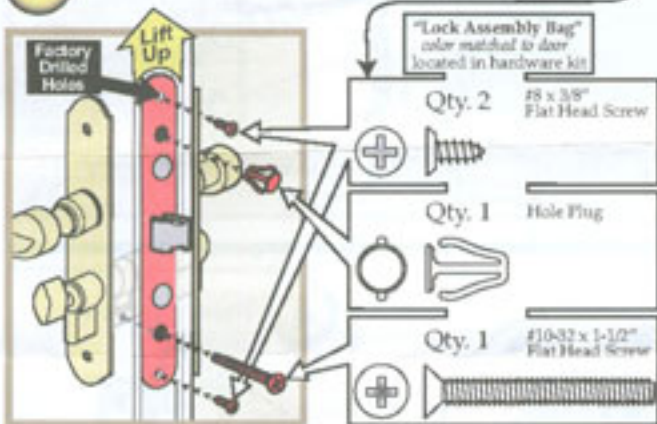
Continued from page 1

6

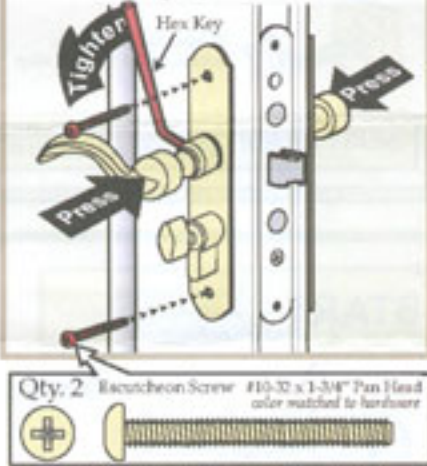
Loosely assemble:  
interior handle,  
black bushing,  
interior escutcheon,  
and exterior assembly.



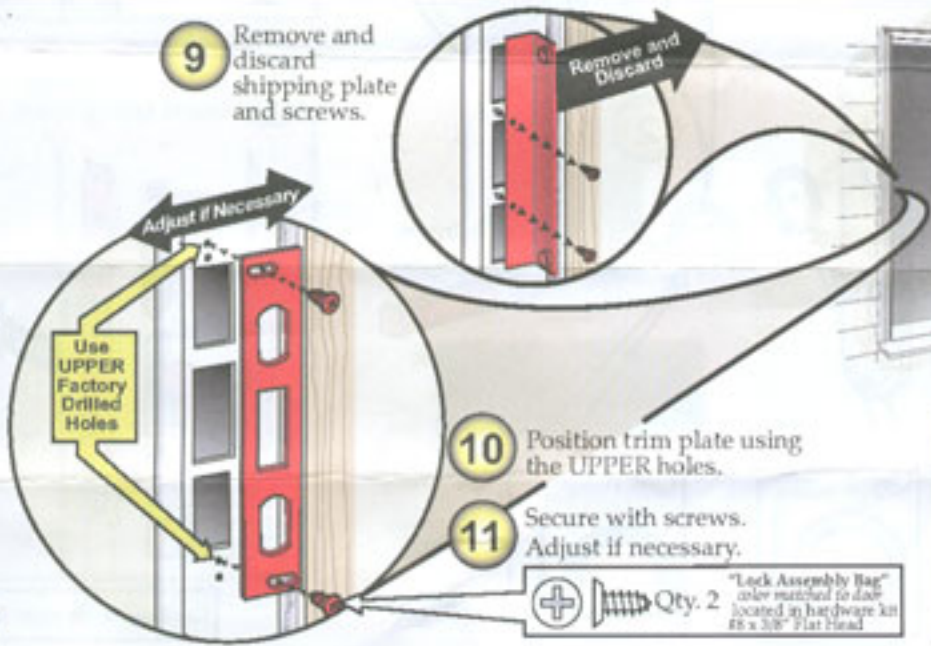
7 Secure with fasteners - in the following order.



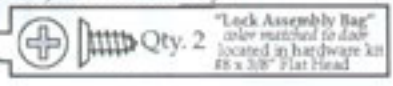
8 Secure with screws. Then, hold handles together and tighten interior set screw.



9 Remove and discard shipping plate and screws.



10 Position trim plate using the UPPER holes.  
11 Secure with screws. Adjust if necessary.



**Finished**  
with the hardware installation.

Return to Page 8 of your "Owners Manual and Installation Guide" to complete the installation.

© 2004 Inella Corporation. All Rights Reserved. 2

33251